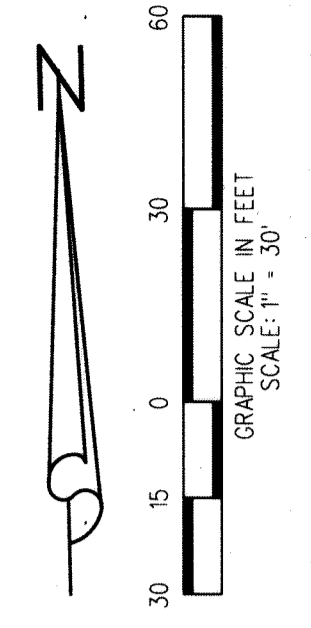
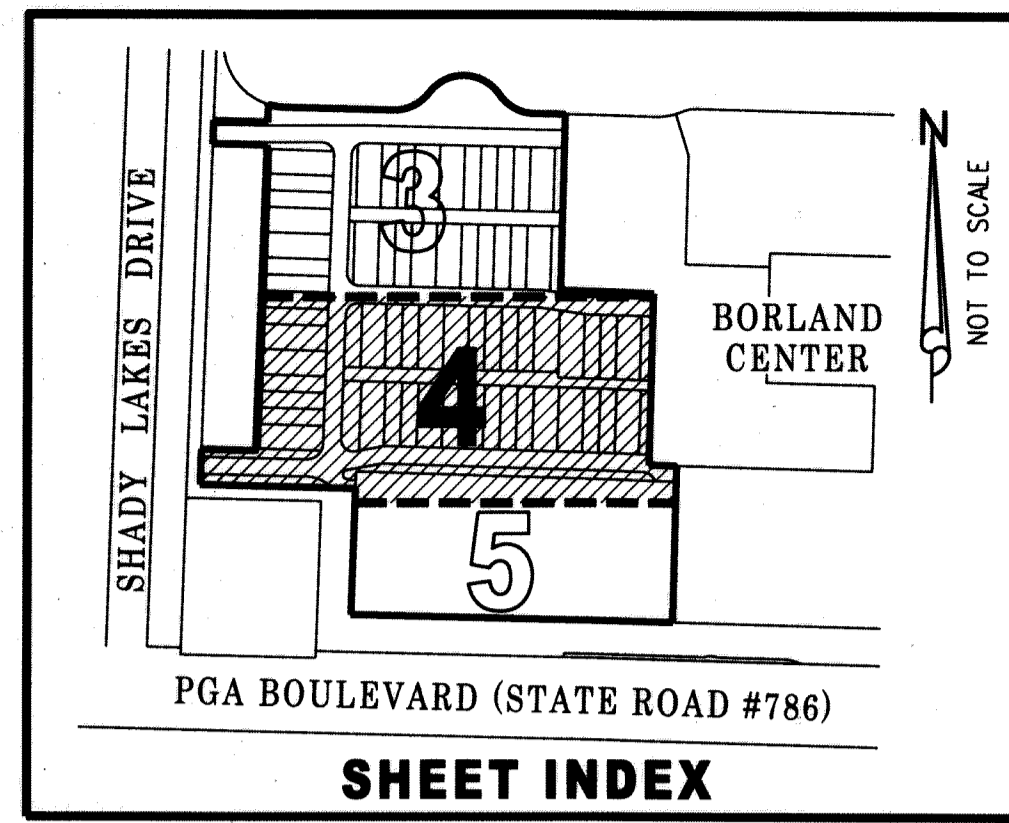
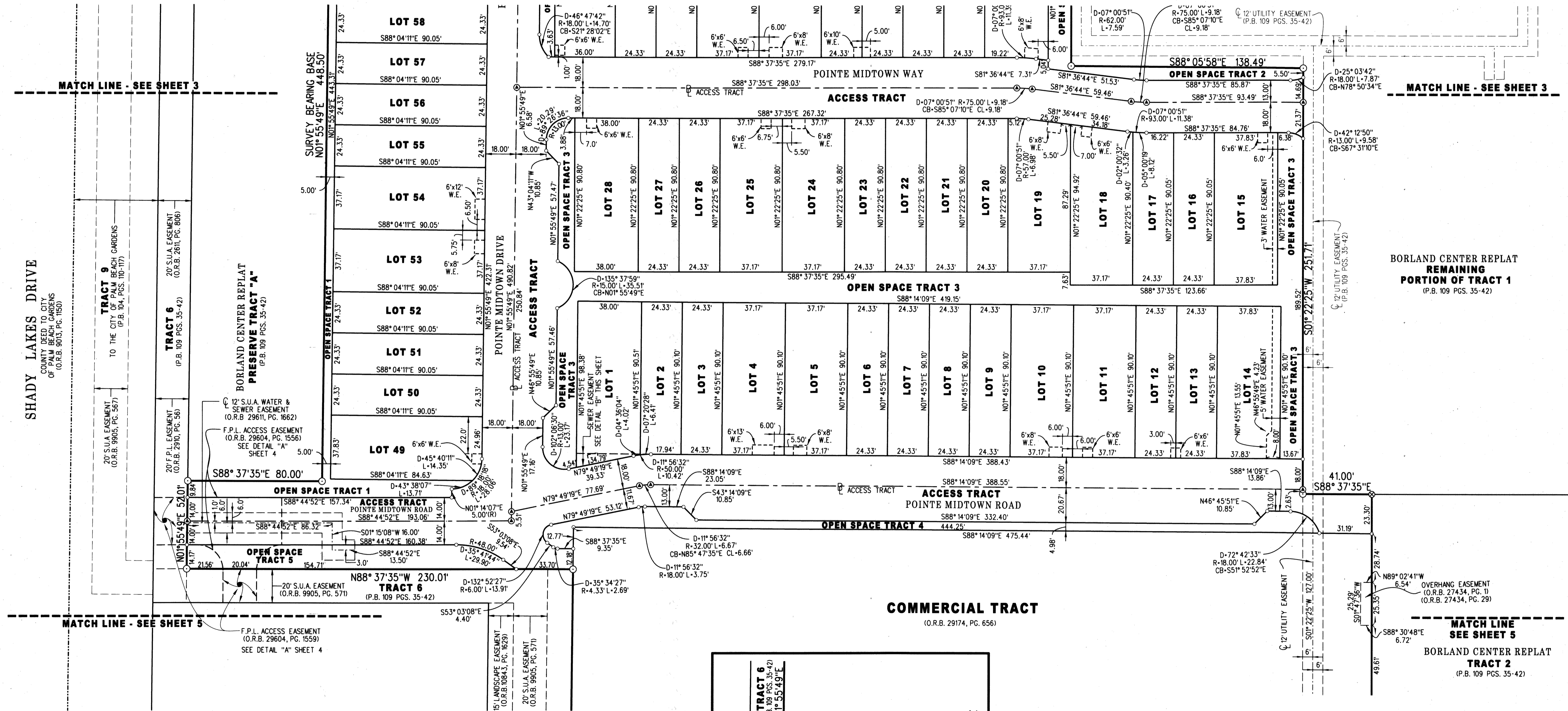


# POINTE MIDTOWN

BEING A REPLAT OF A PORTION OF TRACT 1, BORLAND CENTER REPLAT,  
AS RECORDED IN PLAT BOOK 109, PAGES 35 THROUGH 42, PUBLIC RECORDS OF  
PALM BEACH COUNTY, FLORIDA, LYING IN SECTION 1, TOWNSHIP 42 SOUTH, RANGE 42 EAST,  
CITY OF PALM BEACH GARDENS, PALM BEACH COUNTY, FLORIDA  
JANUARY 2018 SHEET 4 OF 6

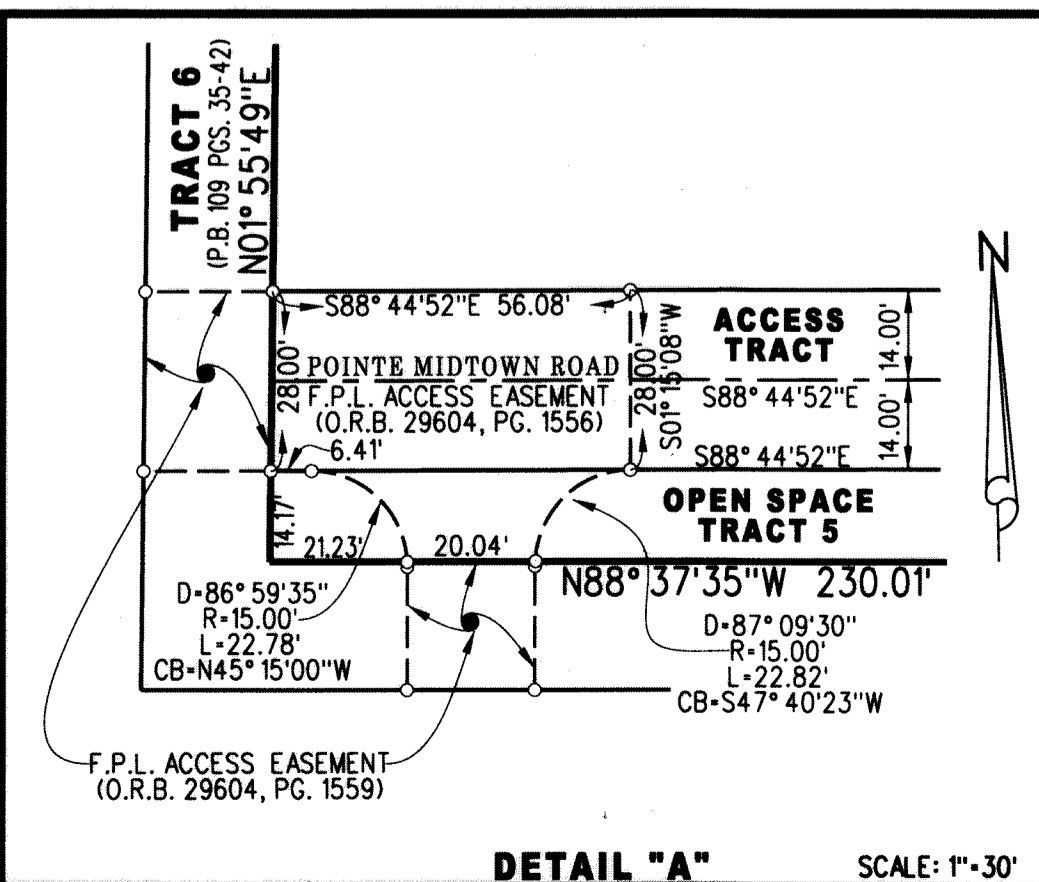
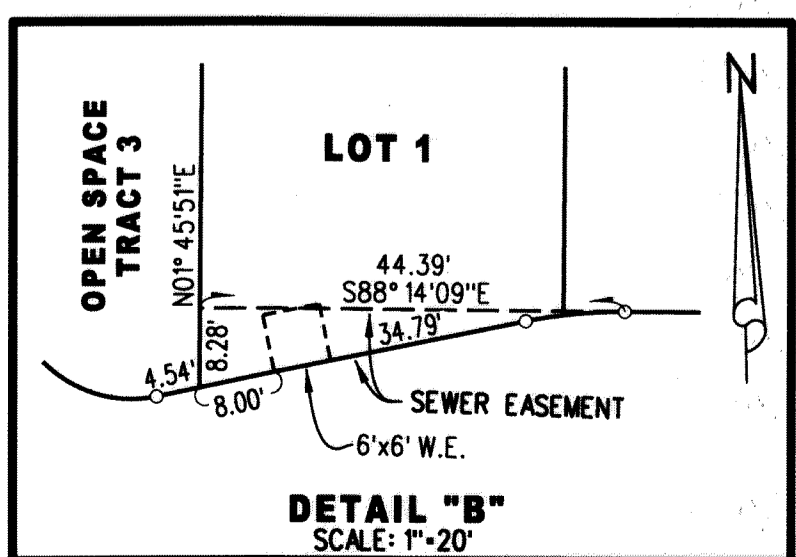


123



- ABBREVIATIONS:**
- CB = CHORD BEARING
  - CL = CHORD LENGTH
  - D = DELTA
  - F.P.L. = FLORIDA POWER & LIGHT CO.
  - L = ARC LENGTH
  - L.B. = LICENSE BUSINESS
  - O.R.B. = OFFICIAL RECORD BOOK
  - P.B. = PLAT BOOK
  - PG. = PAGE
  - P.C.P. = PERMANENT CONTROL POINT
  - P.R.M. = PERMANENT REFERENCE MONUMENT
  - P.S.M. = PROFESSIONAL SURVEYOR AND MAPPER
  - R = RADIUS
  - S.E. = SOUTHEAST
  - S.U.A. = SEACOAST UTILITY AUTHORITY
  - W.E. = WATER EASEMENT
  - (R) = RADIAL LINE

- LEGEND:**
- ⊙ = SET 5/8" IRON & ALUMINUM CAP STAMPED "PRM LB 4431"
  - ⊗ = SET MAG NAIL & DISK STAMPED "PRM LB 4431"
  - ⊕ = SET MAG NAIL & DISK STAMPED "PCP LB 4431"
  - = BASELINE
  - = CENTERLINE



**LIDBERG LAND SURVEYING, INC.**  
LB4431 675 West Indiantown Road, Suite 200, Jupiter, Florida 33458 TEL. 561-746-8454

CAD. K:\UST \ 014242 \ 109-35 \ 05-046E-306 \ 05-046E-306.DGN	REF.	FB.	PG.	JOB 05-046E-306
F.LD.				DATE 12/06/2016
OFF. R.J.W.				DWG. D05-046PP
CKD. D.C.L.	SHEET 4	OF 6		